

PUBLIC HEARING NOTICE

TOWN OF CHEBEAGUE ISLAND BOARD OF SELECTMAN

SEPTEMBER 19, @ THE CHEBAEAGUE ISLAND HALL

As part of its regularly scheduled monthly meeting, the Town of Chebeague Island Board of Selectman will hold a public hearing on Wednesday, September 19, 2007 at the Chebeague Island Hall. The purposes of said hearing is to invite discussion and receive comments from the public at large and town standing committees with respect to the Central Maine Power Company's (CMP) application to the State of Maine to renew a 30 year easement for electrical cables on publicly owned submerged lands. A representative from CMP will also attend the hearing. Based on the comments received or submitted the Board of Selectman will then submit appropriate comments pertaining to any significant impacts of the CMP's electrical cables, as well as if such structures are not in compliance with local permitting requirements.

NOTE: Relevant materials are attached for public review in advance of the hearing.



STATE OF MAINE
DEPARTMENT OF CONSERVATION
22 STATE HOUSE STATION
AUGUSTA, MAINE
04333-0022

JOHN ELIAS BALDACCI
GOVERNOR

August 21, 2007

PATRICK K. McGOWAN
COMMISSIONER

Municipal Officials
Town of Chebeague Island
P.O. Box 22
Chebeague Island, ME 04017

RE: Submerged Lands Application – Central Maine Power Company

Dear Municipal Officials:

The Bureau of Parks and Lands has received applications from the owner listed above regarding their electrical cables on publicly-owned submerged lands below mean *low* water in Chandler Cove and in Casco Bay, Chebeague Island. The Bureau’s records indicate that the above structures have been in place since 1975 and therefore were granted “constructive easements” to occupy submerged lands for 30 years. The easements expired on October 1, 2005 and the owner has applied for new conveyances (leases or easements) to maintain their existing structures on public submerged lands. No changes to the structures are proposed.

The purpose of this letter is to provide the municipality with an opportunity to comment on any significant impacts these structures may have as described in the enclosed Notice. We also ask that the municipality notify us if the existing structures are not in compliance with local permitting requirements such as expansions without prior permit approval. Please post the enclosed Notice in the municipal office. *The Bureau has established a 14 – day public comment period for this application unless we receive a request for an extension.*

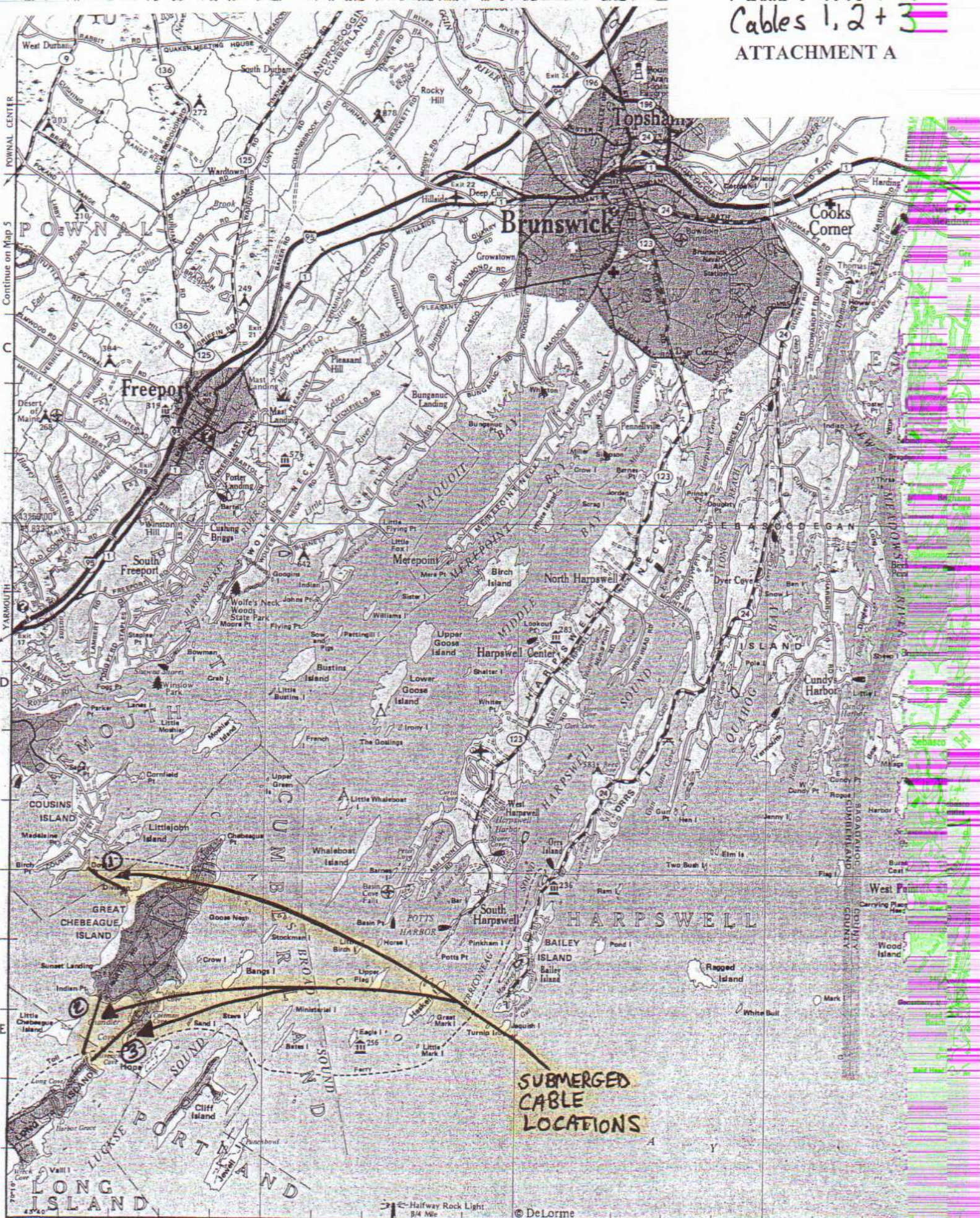
Comments from the municipal officials and/or harbormaster will greatly assist the Bureau in determining whether there is an opportunity to improve an existing condition before a new 30-year conveyance is granted. If significant concerns are raised regarding public trust rights the Bureau will try to work with the owner to lessen these impacts by modifying any non-permanent elements of a structure. Generally, the Bureau will not request that permanent structures be modified.

If you have any questions, please feel free to contact me at 287-6128, in writing, or by email to sara.brusila@maine.gov. Thank you.

Sincerely,

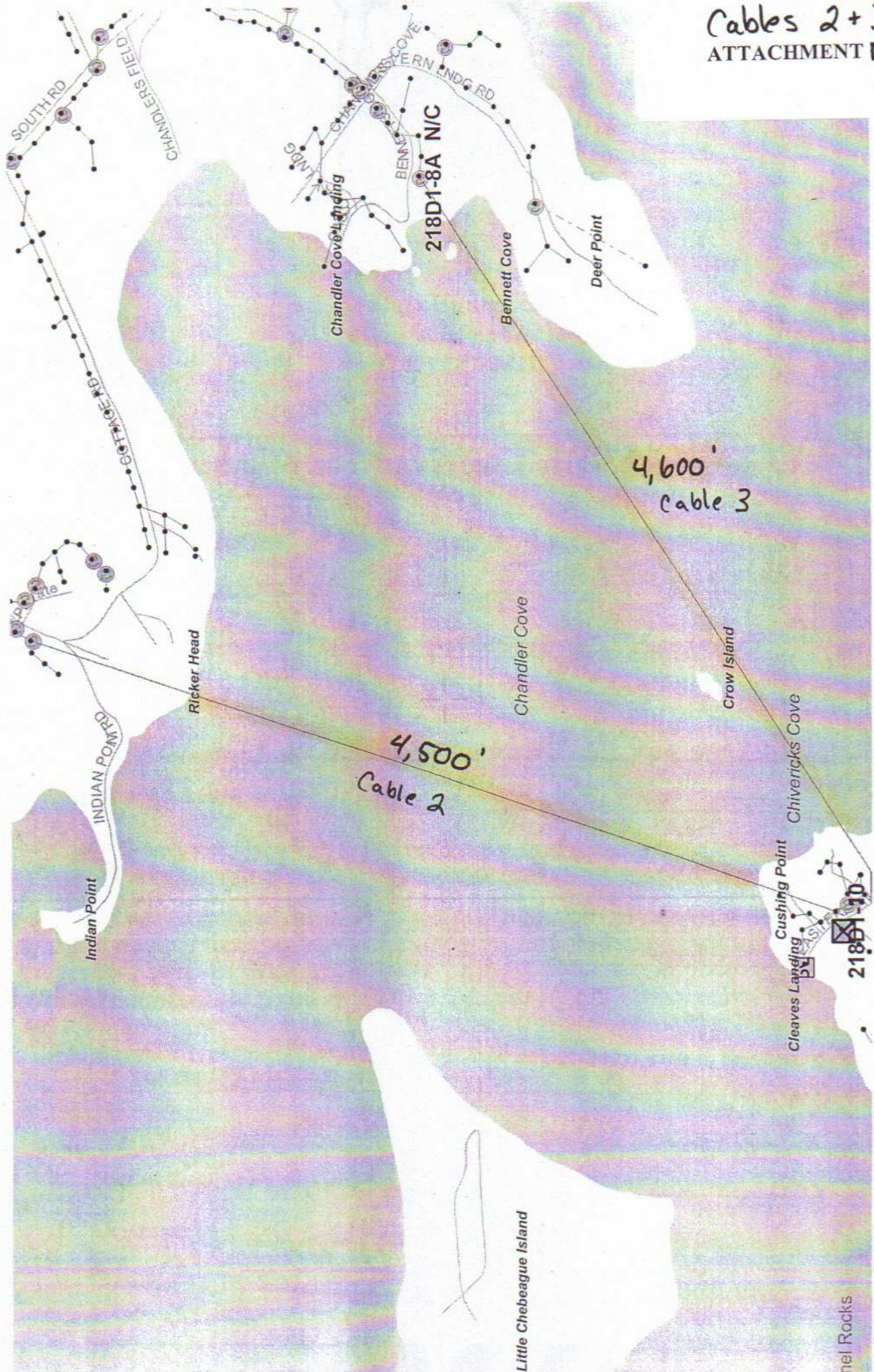
Sara L. Brusila
Submerged Lands Technician
Enc: notice, plans
cc: Harbormaster w/ enclosures





SUBMERGED
CABLE
LOCATIONS

Cables 2+3
ATTACHMENT D



4,500'
Cable 2

4,600'
Cable 3

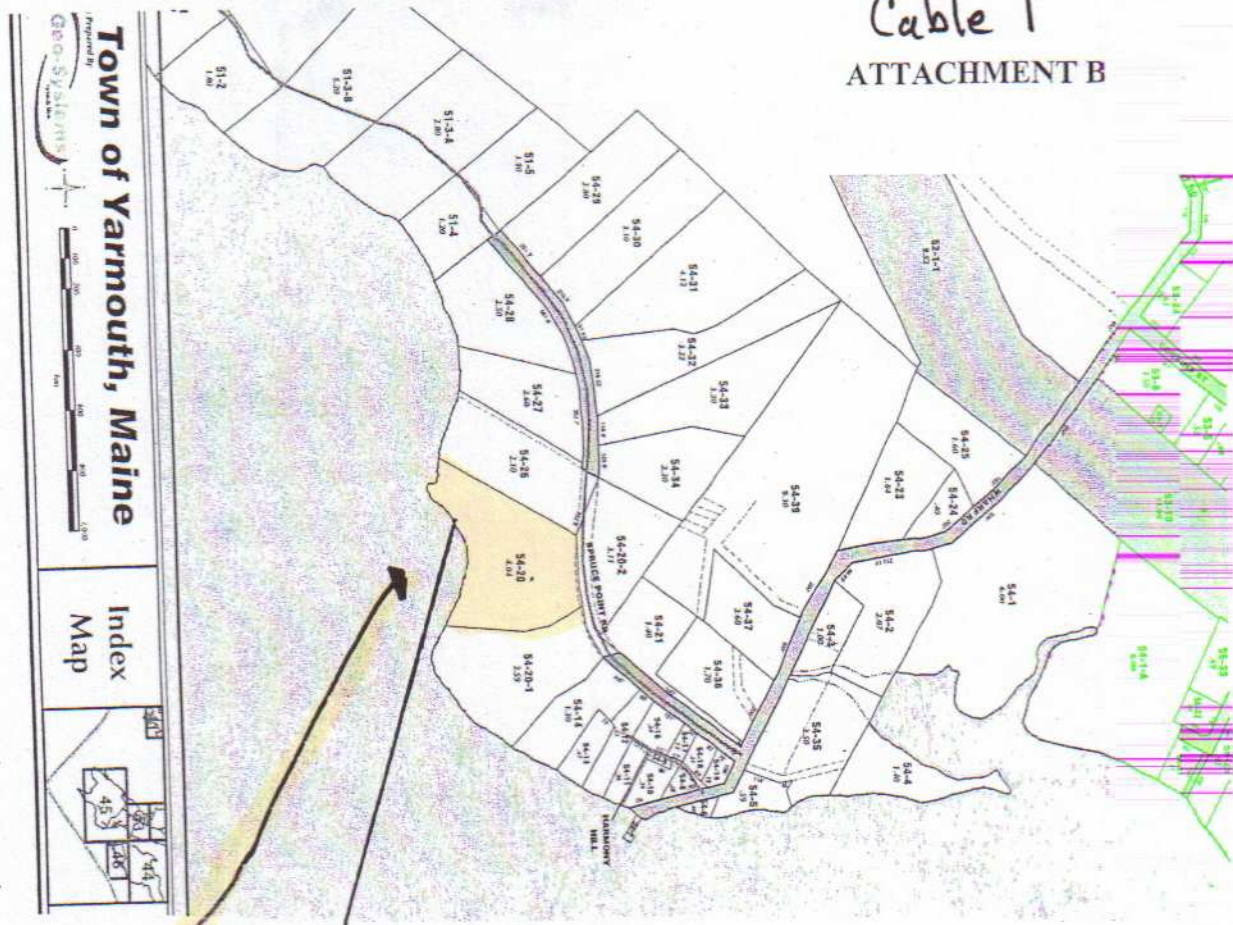
218D1-10

218D1-8A N/C

Little Chebeague Island

Inlet Rocks

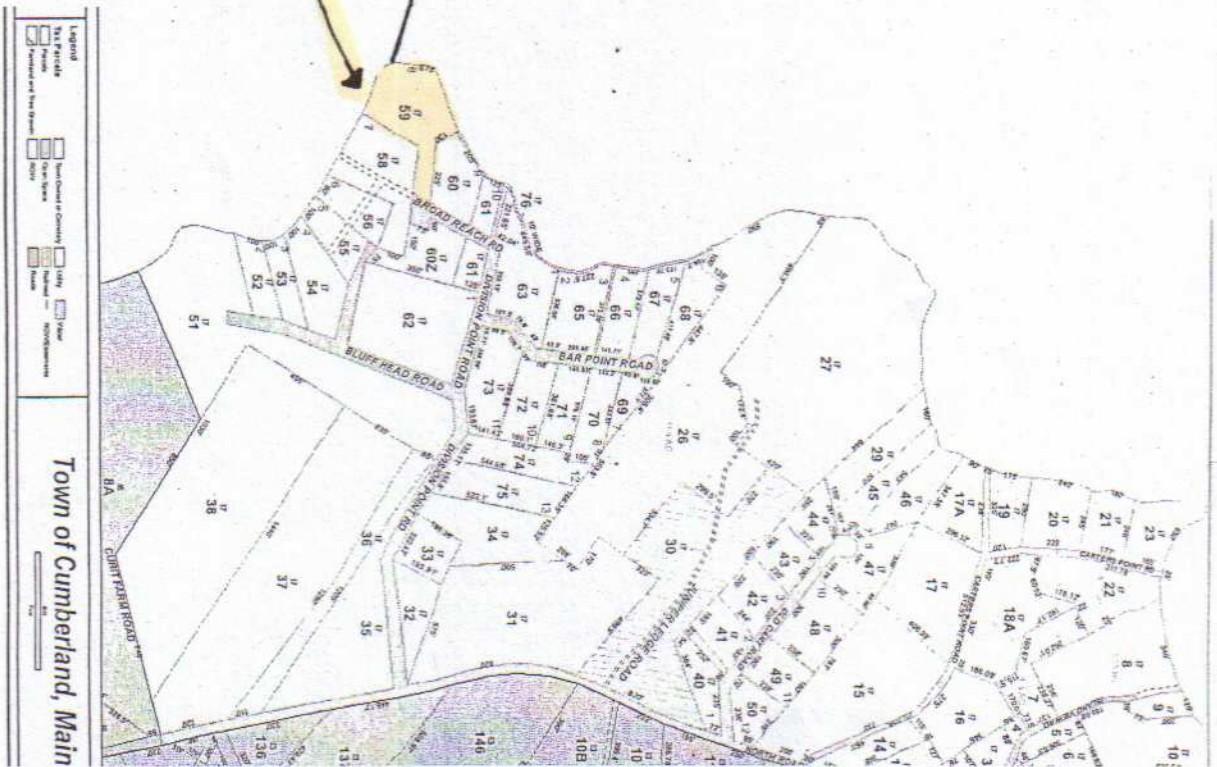
Cable 1 ATTACHMENT B



Town of Yarmouth, Maine
Geo-Solutions

Index Map

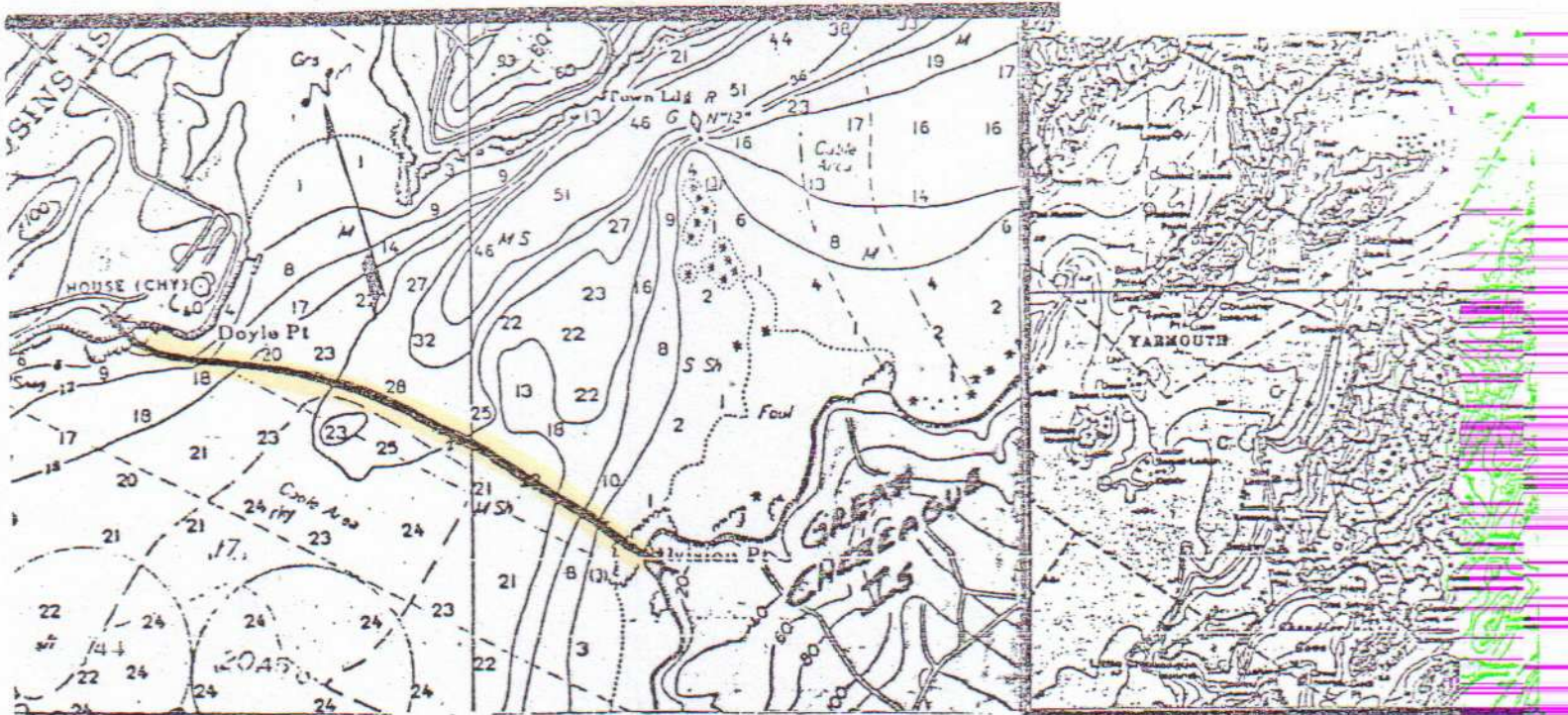
*Subject
Parcels*



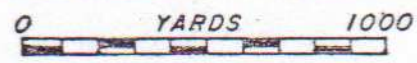
Legend
 3rd Period
 4th Period
 5th Period
 6th Period
 7th Period
 8th Period
 9th Period
 10th Period
 11th Period
 12th Period
 13th Period
 14th Period
 15th Period
 16th Period
 17th Period
 18th Period
 19th Period
 20th Period
 21st Period
 22nd Period
 23rd Period
 24th Period
 25th Period
 26th Period
 27th Period
 28th Period
 29th Period
 30th Period
 31st Period
 32nd Period
 33rd Period
 34th Period
 35th Period
 36th Period
 37th Period
 38th Period
 39th Period
 40th Period
 41st Period
 42nd Period
 43rd Period
 44th Period
 45th Period
 46th Period
 47th Period
 48th Period
 49th Period
 50th Period
 51st Period
 52nd Period
 53rd Period
 54th Period
 55th Period
 56th Period
 57th Period
 58th Period
 59th Period
 60th Period
 61st Period
 62nd Period
 63rd Period
 64th Period
 65th Period
 66th Period
 67th Period
 68th Period
 69th Period
 70th Period
 71st Period
 72nd Period
 73rd Period
 74th Period
 75th Period
 76th Period
 77th Period
 78th Period
 79th Period
 80th Period
 81st Period
 82nd Period
 83rd Period
 84th Period
 85th Period
 86th Period
 87th Period
 88th Period
 89th Period
 90th Period
 91st Period
 92nd Period
 93rd Period
 94th Period
 95th Period
 96th Period
 97th Period
 98th Period
 99th Period
 100th Period

Town of Cumberland, Maine

Cable 1
ATTACHMENT C

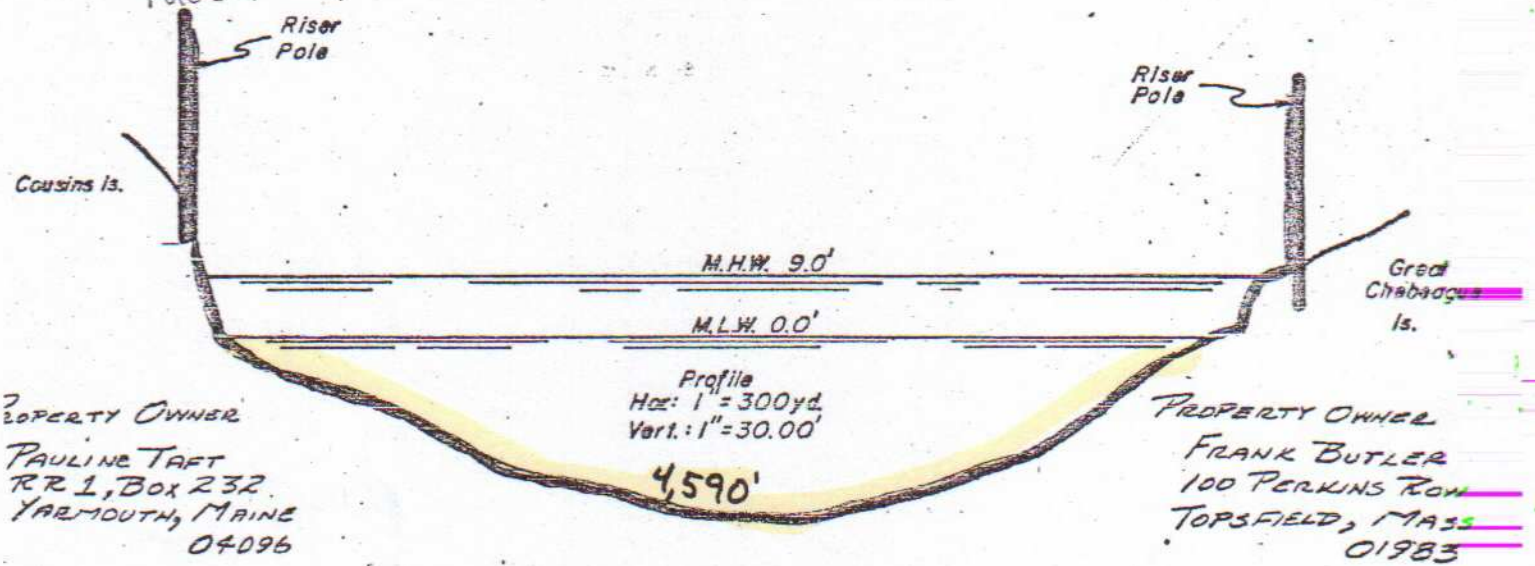


CBGS Chart 325



VICINITY MAP
NO SCALE

Spruce Point Rd.
Pole 5-1



PROPERTY OWNER
PAULINE TAFT
RR 1, BOX 232
YARMOUTH, MAINE
04096

PROPERTY OWNER
FRANK BUTLER
100 PERKINS ROW
TOPSFIELD, MASS
01983

3/C - 4/0 A.W.G. Al. Conductor
Cross-Link Polyethylene Insulation
35 KV Rated, Operating At 12.47 KV

SUBMARINE CABLE
From: Cousins Is. To Great Chebeague Is.
At: Yarmouth & Cumberland
County Of: Cumberland - State Of: Maine
Application By: Central Maine Power
Company
Date 11/5/79
Dist. Engr. R.C. Emmons